

CERTIFICATE OF LOCATION OF GOVERNMENT CORNER

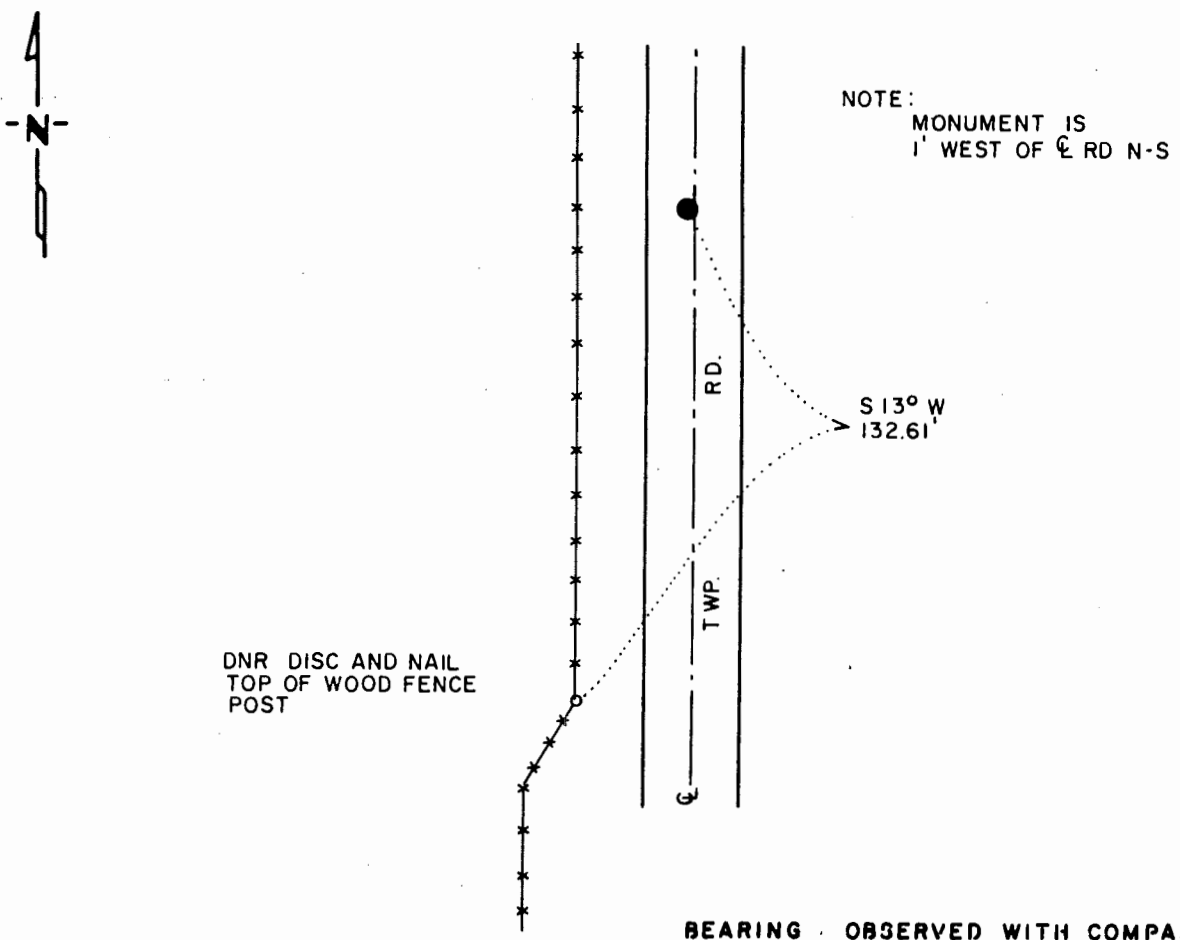
EAST QUARTER Corner of Section 10, Township 108 N., Range 43 W., 5th P.M.

STATE OF MINNESOTA, County of MURRAY

At the corner location shown on the sketch:

- On 5-14-86 found a DETERIORATED WOOD STAKE, DOWN 18"
DATE
- left monument as found, lowered monument, removed monument (explain)
- On 5-14-86 placed a 1 1/4" x 1 1/4" x 20" PERFORATED STEEL TUBE WITH
DATE
ALUMINUM CAP STAMPED "DNR SURVEY MARKER", DOWN 0.3'

SKETCH OF REFERENCE TIES



BEARING OBSERVED WITH COMPASS

Statement of evidence relative to this corner location is on back of page.

J.A.G. 7-1-86
FILE G-383

I hereby certify that this document and the data contained herein was prepared by me or under my direct supervision.

Lowell R. Pomeroy, Jr. 8-21-86
SIGNATURE DATE

Registration No. 1705

- Land Surveyor, Professional Engineer
- County Surveyor, County Engineer

OFFICE OF THE COUNTY RECORDER
County of _____

I hereby certify that this document was filed in the Co. Recorders office at _____ M. on the _____ day of _____ A.D., 19__

County Recorder _____

By _____, Deputy

DOCUMENT NO. _____

East Quarter Corner Section 10, Township 108 North, Range 43 West

This corner was originally established by the U. S. General Land Office survey in 1866. The government notes show corner marked with a wood post set in mound of earth with pits and trench dug around the mound.

In May 1986, the DNR Bureau of Engineering contacted the Murray County Offices of the Recorder and Highway Engineer for corner information.

No resurvey information was obtained for this corner.

On May 14, 1986, the DNR Bureau of Engineering hired a backhoe operated by Buffalo Ridge Plumbing and Heating of Ruthton to dig for evidence of this corner. Dug a 6-ft. east-west by 12-ft. north-south hole, the center at the following location; on center line of a north-south road midway between occupation, (road intersections) at the northeast and southeast corners of Section 10. Found a deteriorated wood stake down 18" at natural ground. Wood stake is:

1 ft. west of center line road
within 1 ft. to 2 ft. of the center of the hole
inline with fence west near the center of Section 10

Accept the wood stake as the location of the corner.

Traverse information is available from the DNR Bureau of Engineering.

S712